

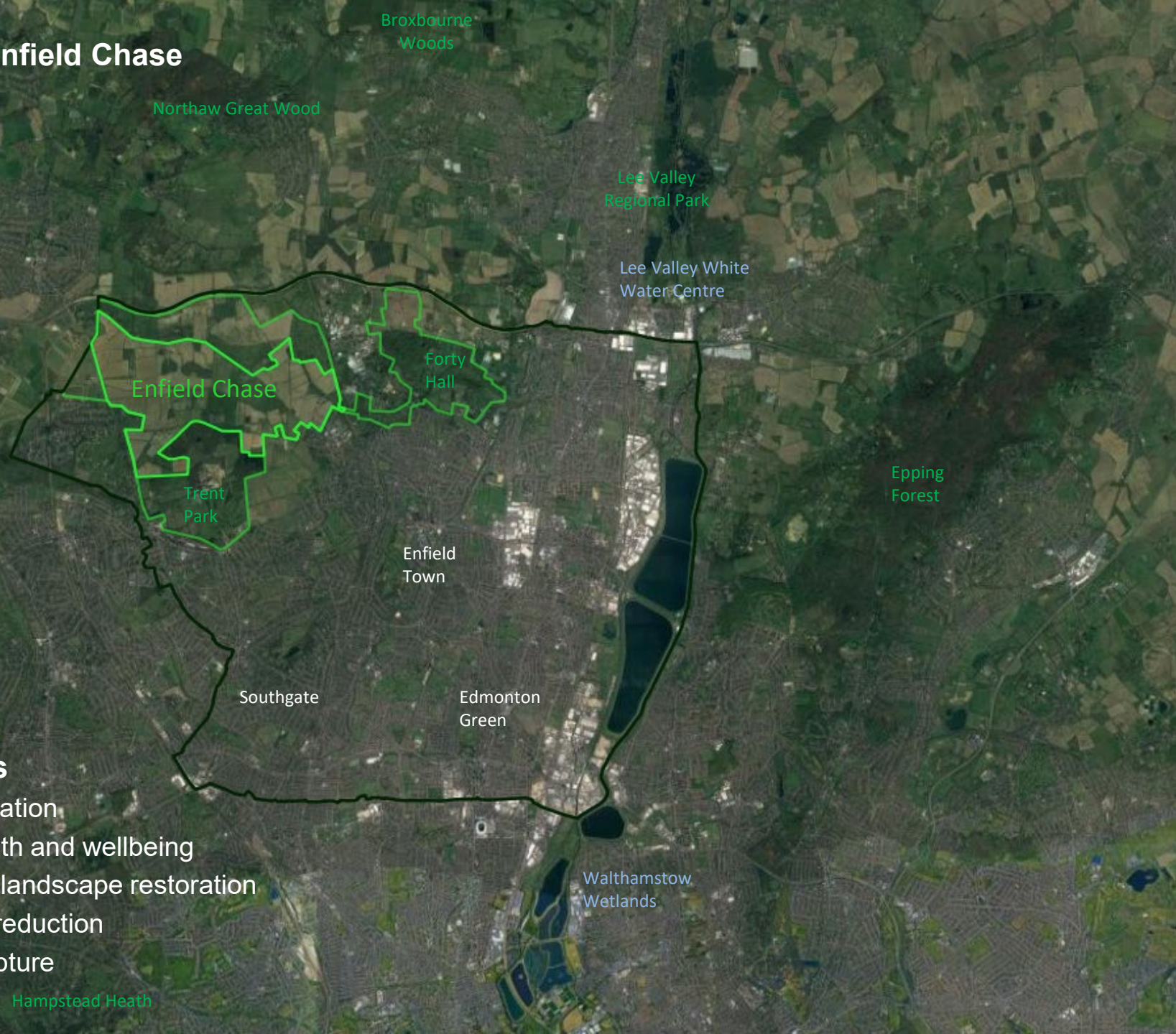
Rewilding Enfield Chase

Environment and Climate Action Scrutiny Panel

Tuesday 17th January 2023



Rewilding Enfield Chase



Northaw Great Wood

Broxbourne
Woods

Lee Valley
Regional Park

Lee Valley White
Water Centre

Enfield Chase

Forty
Hall

Trent
Park

Enfield
Town

Epping
Forest

Southgate

Edmonton
Green

Walthamstow
Wetlands

Hampstead Heath

Key benefits

- Habitat creation
- Public health and wellbeing
- Heritage – landscape restoration
- Flood risk reduction
- Carbon capture

Rewilding Enfield Chase Vision

- Restore the natural landscape of Enfield Chase for the benefit of people and wildlife
- Create a mosaic habitat of woodland, grassland and wetlands with improved access
- Diversify and strengthen the rural economy



Rewilding Enfield Chase Multiple Benefits

- Enhanced biodiversity – restoring ecological processes
- Health and wellbeing – access to nature leads to improved mental and physical health
- Air quality – greening helps to improve air quality by capturing particulates and encouraging active transport
- Climate – mitigating the impact and adapting to climate change
- Water – reducing the impacts of flooding, pollution and drought

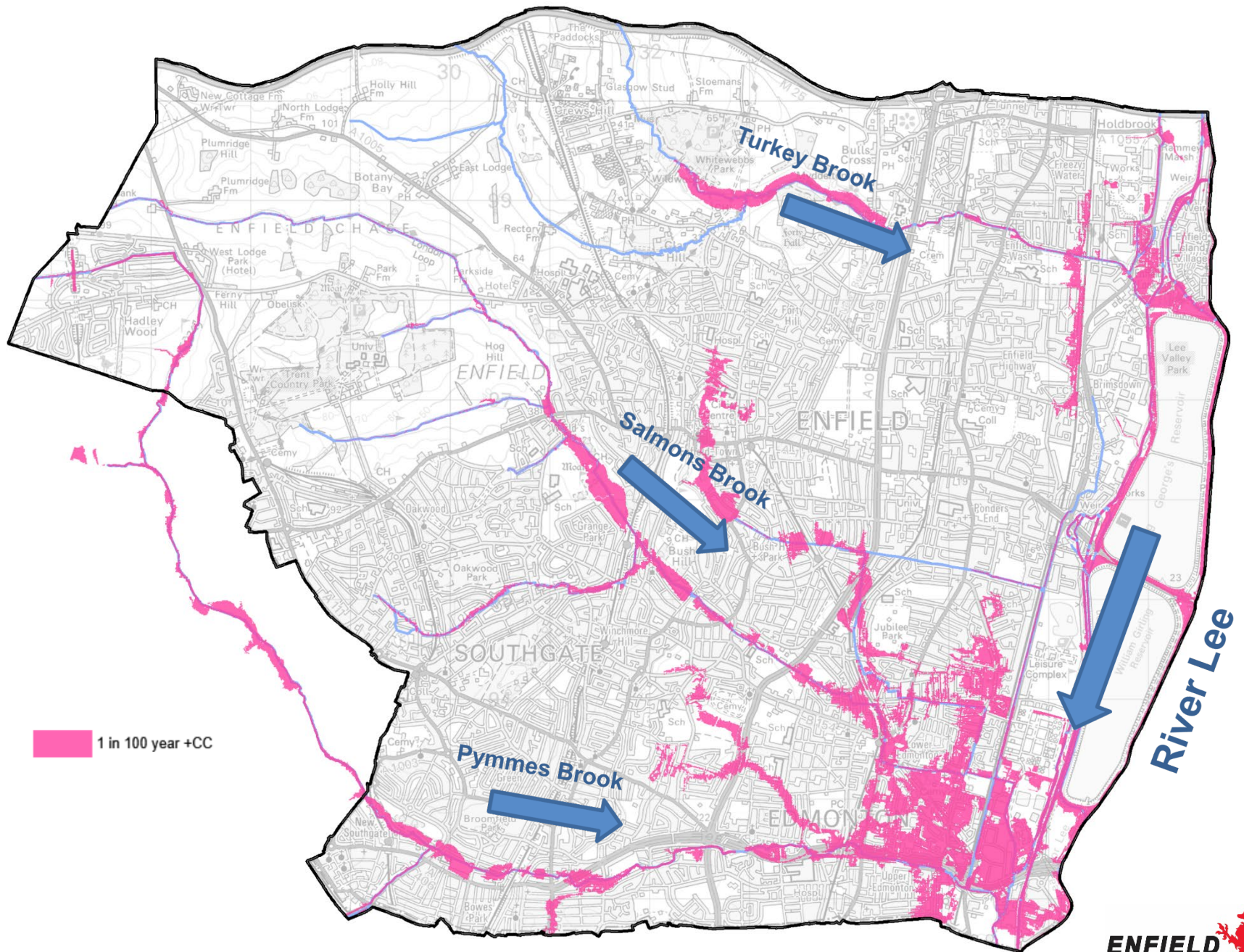




Enfield Chase farming today



Enfield Chase wood pasture





River restoration



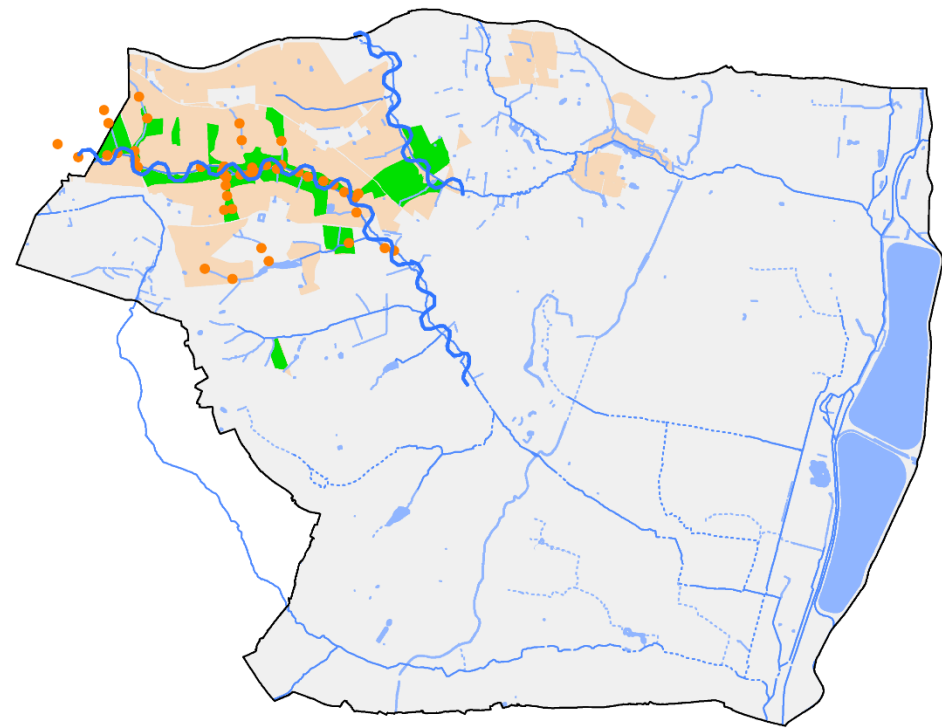
Wetlands



Woodland creation

Natural Flood Management measures include:

- River restoration
- Re-connecting floodplains
- Ponds and wetlands
- Woodland creation



ENFIELD CHASE RESTORATION MAP



- PROPOSED WOODLAND
- EXISTING WOODLAND
- GREEN SPACE
- FARMLAND
- URBAN AREA
- LONDON LOOP

SUPPORTED BY
MAYOR OF LONDON

 **Forestry Commission**


THAMES21


**CLIMATE ACTION
ENFIELD**

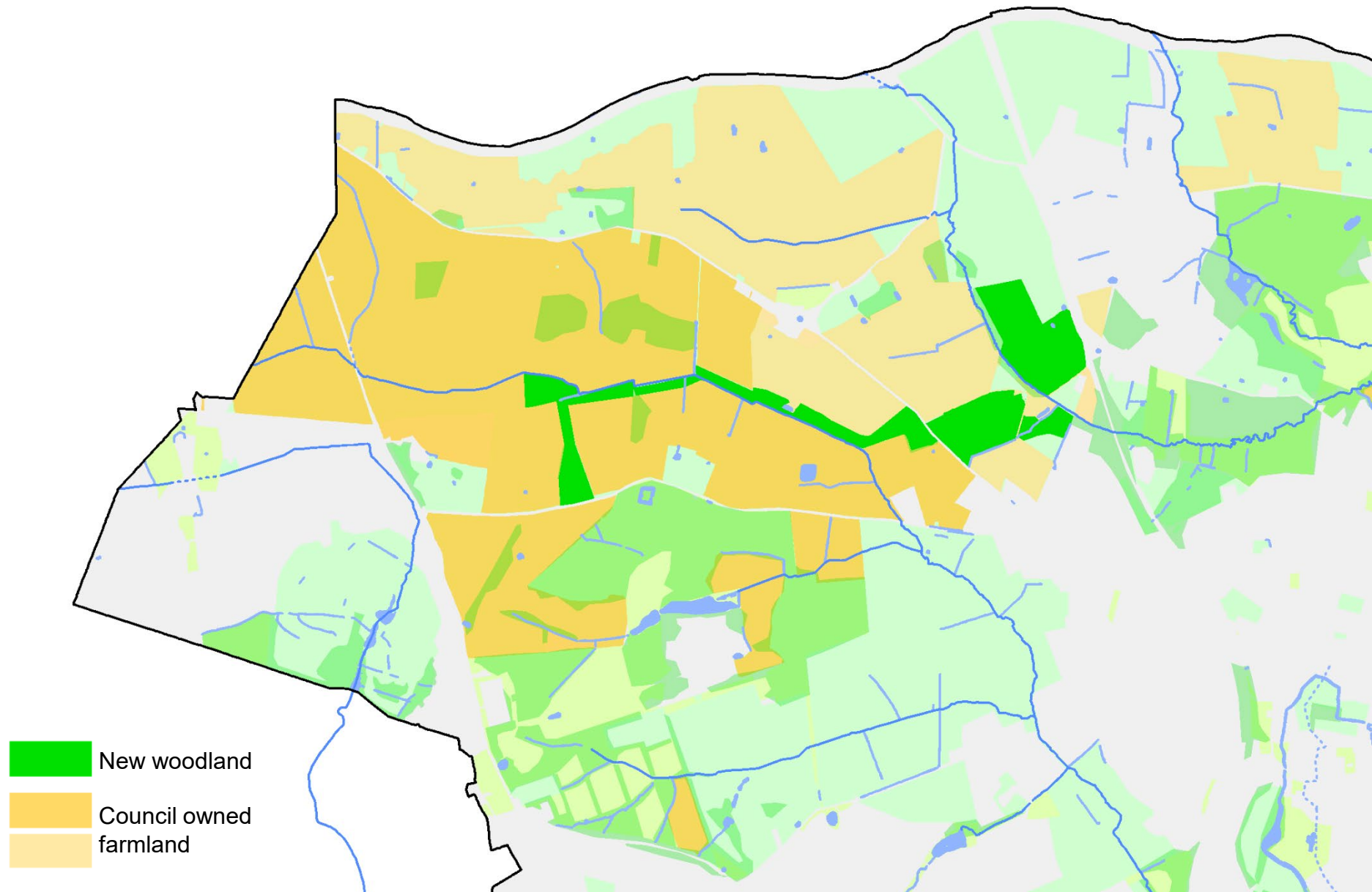
ENFIELD
Council 

Enfield Chase Woodland creation



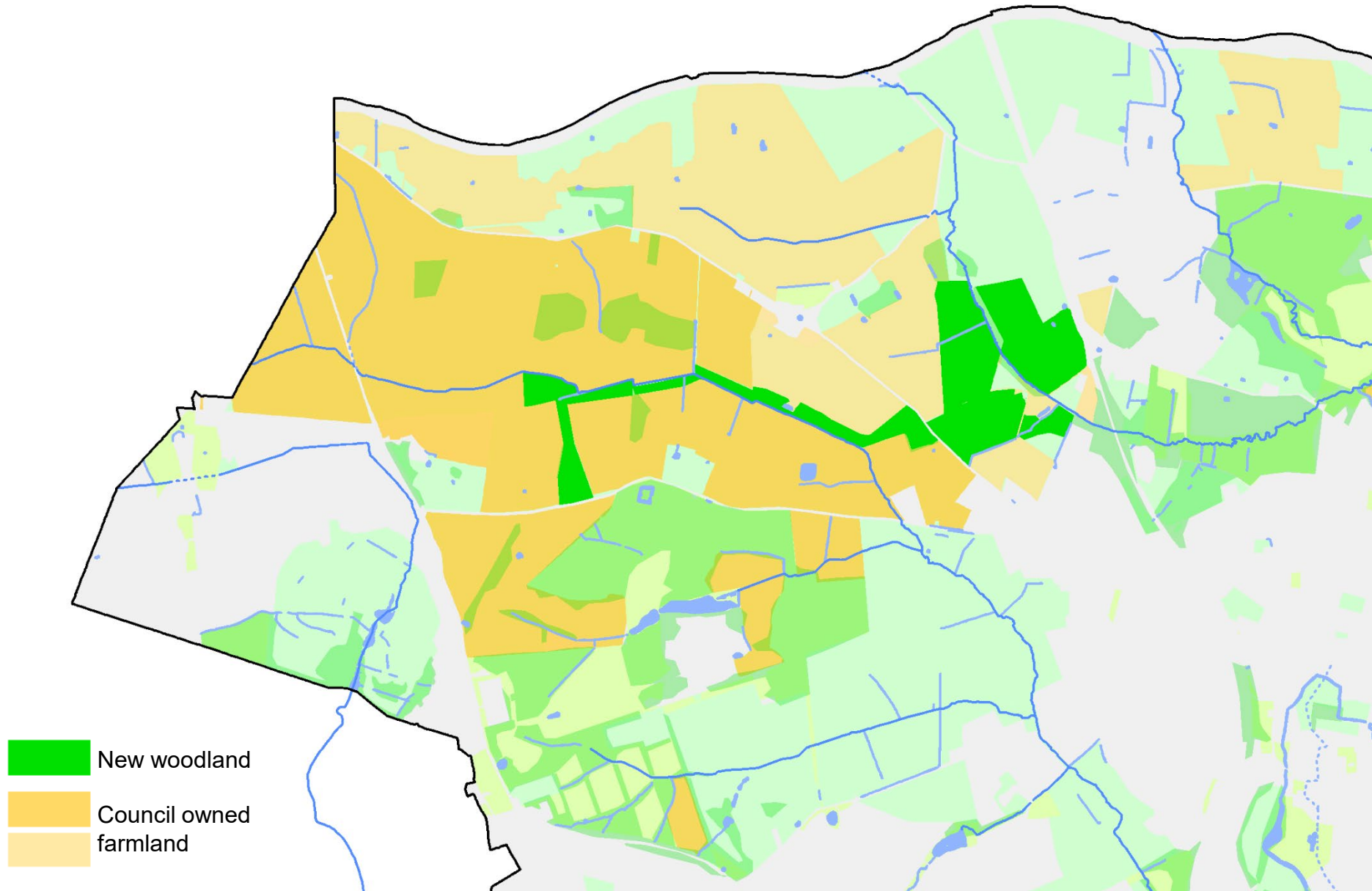
Years 1-2 2020-22

- 100,000 trees planted over 60 hectares



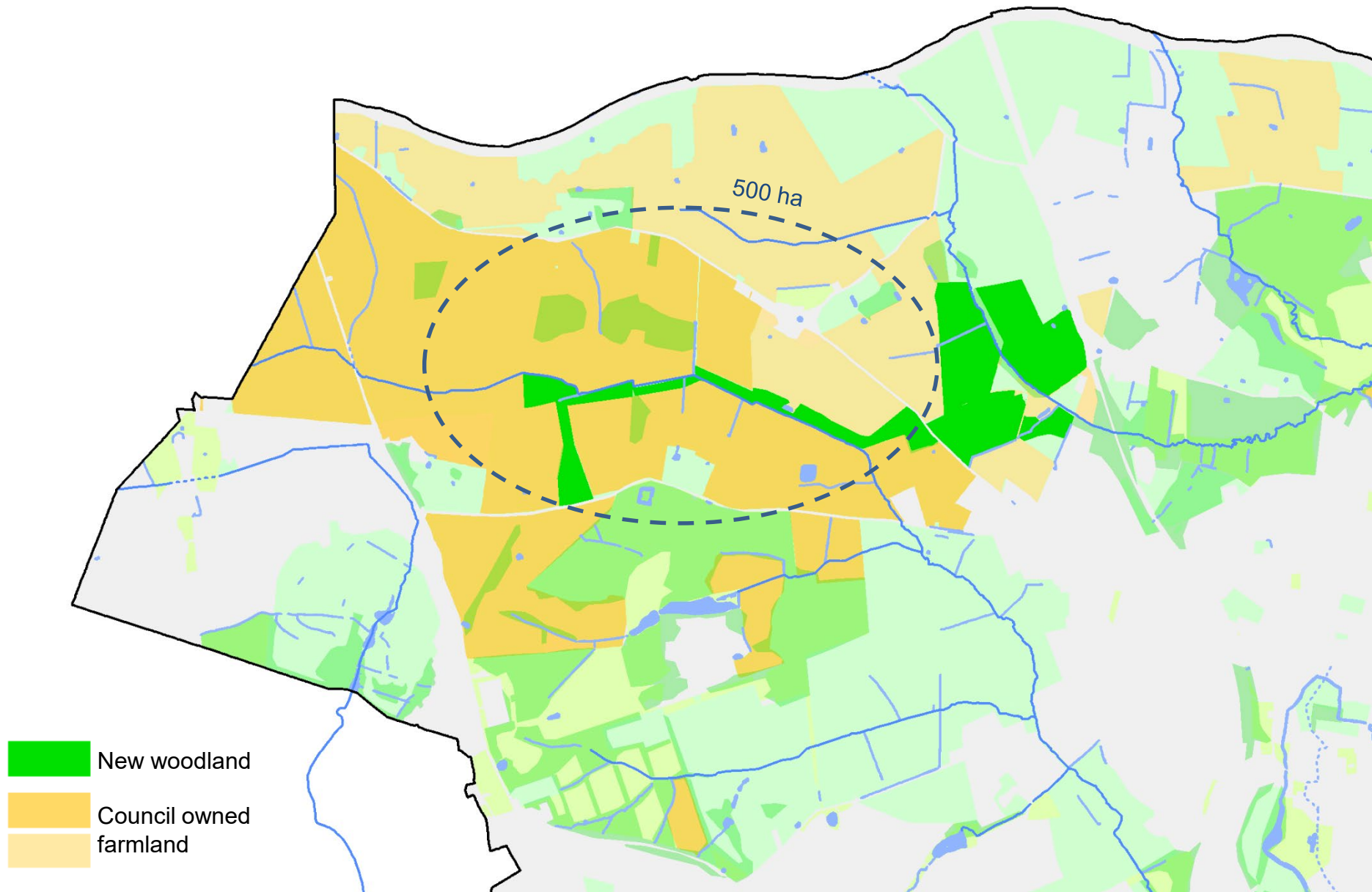
Year 3 2022/23

- Planting 34,000 trees across 20 hectares



Future Years 2024 and beyond

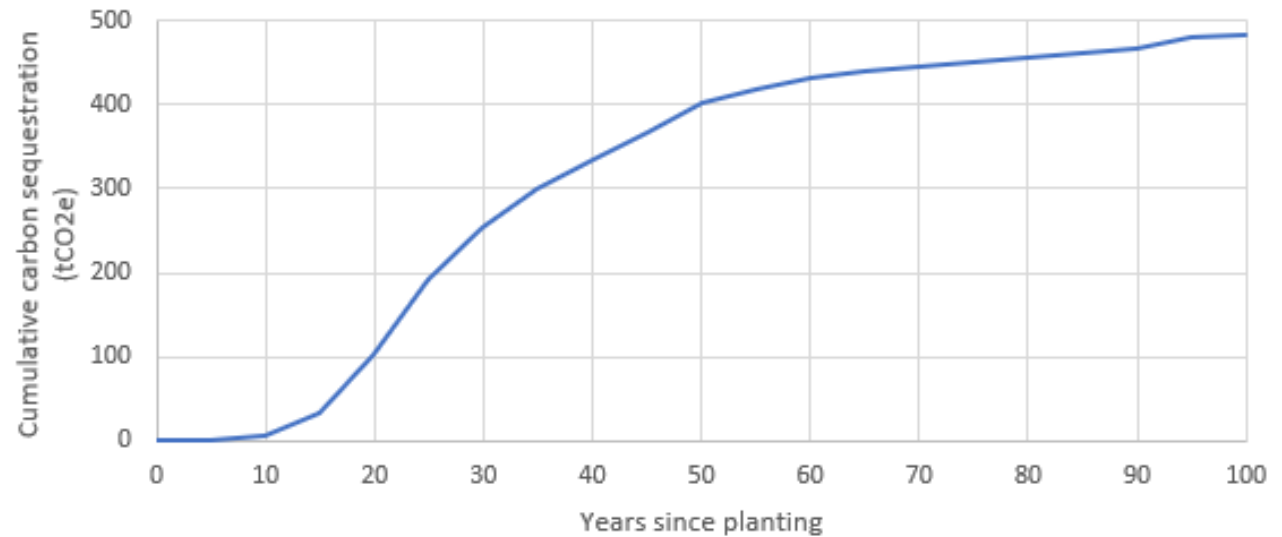
- Planting 1 million trees would require 500 hectares



Carbon Capture

- Woodland creation, together with other forms of rewilding and landscape restoration, has significant potential to help achieve Enfield Council's aim of becoming carbon neutral by 2030
- Enfield's **Climate Action Plan** estimates by 2030, following direct action to reduce emissions, there will still be a potential gap of **585 tCO₂e** (tonnes of carbon dioxide equivalent emissions) per year between the emissions the Council continues to produce and the target of zero
- Using a conservative estimate for carbon sequestration of 5.6 tCO₂e/ha/year, estimates of carbon capture can be made for the Enfield Chase woodland creation project

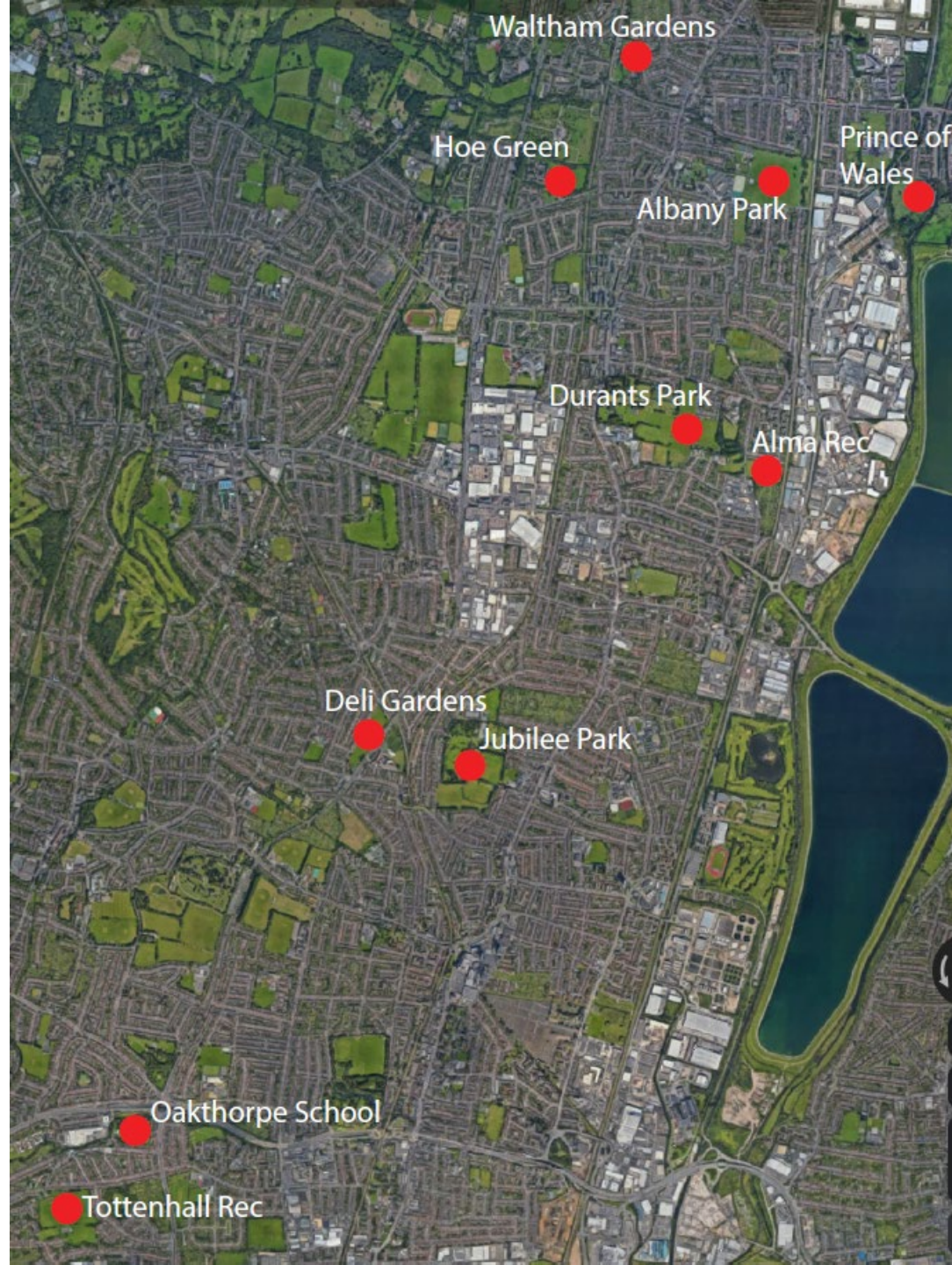
Woodland Creation Targets	Year	Estimate Carbon tCO ₂ e/year
80 ha (current proposals)	2023	448
140 ha (Climate Action Plan)	2025	784
500 ha (estimated area required to plant 1 million trees)	2030	2,800



Estimated cumulative carbon sequestration for a typical single hectare of woodland over 100 years
(www.woodlandcarboncode.org.uk)

Proposed Urban Tree Planting in 2022-23 (potential tree numbers in brackets)

- Hoe Green (1,000)
- Durants Park (4,000)
- Deli Gardens (600)
- Tottenham Rec (1,200)
- Albany Park (2,000)
- Prince of Wales Open Space (1,000)
- Alma Recreation Ground (3,600)
- Jubilee Park (1,100)
- Oakthorpe School (1,100)
- Bury Lodge Gardens (600)





Forty Hall Estate Beaver reintroduction



Forty Hall Estate Beaver reintroduction



Forty Hall Estate Beaver reintroduction

Urban Rewilding Strategic context

- **Blue and Green Strategy** – includes aim to create wilder, more natural spaces to enable biodiversity to thrive, support the restoration of ecosystems and increase interest among people
- **Climate Action Plan** – vision states that by 2030, we will have a natural environment that enhances biodiversity, provides significant protection against flooding and which helps to mitigate overheating in London. By 2040 we will have achieved a net increase in green infrastructure of 25% compared to today
- **Local Plan** – strategic objectives include delivering green infrastructure improvements, including accessible new woodland, rewilded river corridors and new parks and open spaces to support growth
- **Council Plan** – draft priority actions include enhancing and protecting Enfield's parks, open spaces, woodlands, watercourses, wetlands, trees and shrubs

Urban Rewilding Spatial context

- Proposed sustainable transport links

